

Your Full Service GP & Soft Contact Lens Laboratory

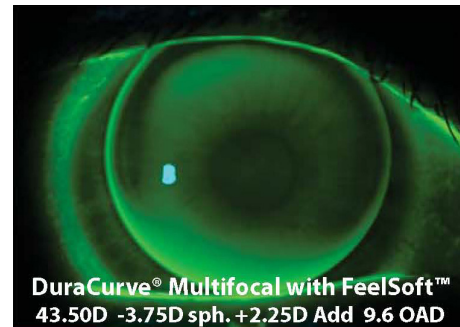
ASPHERIC MULTIFOCAL - DuraCurve® Multifocal

DuraCurve® Multifocal with FeelSoft™

Successfully fitting your low, moderate and advanced presbyopes is made easy with DuraCurve Multifocal. This unique design features an ultra-thin profile which maximizes patient comfort.

Adding the FeelSoft plasma treatment process improves initial lens comfort and allows for an easier adaptation period.

- DuraCurve is available in add powers ranging from +1.50 to +3.50D.
- DuraCurve can be fit empirically or by using our 14-lens fitting set, which you can purchase or request on loan.
- DuraCurve lenses can be ordered with our Risk Free Guarantee Warranty. This entitles you to (2) free exchanges and full cancellation privileges.



FEATURED MATERIAL OPTIONS - DuraCurve™ ES & DuraCurve™ EO

Two Superior GP Material Options

DuraCurve Multifocal is available in all GP materials and featured in:

DuraCurve ES

- 36 Dk
- Daily wear
- Keratoconus designs
- Thin lens designs
- Exceptional durability
- Exceptional wetting

DuraCurve EO

- 82 Dk
- Daily wear
- Presbyopic designs (multifocal/bifocal)
- Thin lens designs
- Corneas with high oxygen demand
- Excellent wetting/deposit resistance

PLASMA TREATMENT - Luzerne FeelSoft™

FeelSoft™ Improves Initial Comfort

At Luzerne Optical, we recommend ordering all of your GP lenses with Luzerne FeelSoft to improve your patients' first impression with their new lenses.

The FeelSoft plasma treatment process allows for improved initial lens comfort and longer wear time. A wettable surface may result in less lens awareness and aid in an easier adaptation period for new GP lens wearers.



The FeelSoft plasma treatment process modifies the superficial layer of the GP lens and generates a hydrophilic surface that promotes enhanced wettability. FeelSoft plasma treated lenses will create a reduced wetting angle and can potentially increase comfort during wear.

The FeelSoft plasma treatment process should last for approximately six months or more. Luzerne Optical can perform a FeelSoft plasma treatment process on previously worn GP lenses to maintain a clean, wettable lens surface.

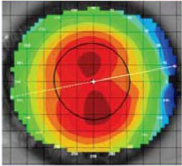
JUPITER SCLERAL™ - The Ultimate Tool for Irregular Corneas

Jupiter Scleral offers improved comfort and visual acuity, practice profitability, an expanded patient base and a proven design. You've heard and read about scleral lenses - let us help you fit them on your irregular cornea patients.

MIKE BERECIN - Laboratory Manager & Clinical Consultant

Mike Berecin, Laboratory Manager and Clinical Consultant at Luzerne Optical, promises to make a difference in your practice and earn your trust with each contact lens order.

Since 1986, Mike has consulted, designed and manufactured hundreds-of-thousands of specialty GP lenses.



Practitioners, nation wide, depend on Mike for his vast knowledge of designing lenses utilizing corneal topography maps. Mike takes great pride and responsibility in each GP order.

You can rely on Mike Berecin at Luzerne Optical for all your GP lens needs. Call Mike today at **800-233-9637 ext. 282**.

Full Service GP Laboratory

From initial customer contact, clinical consultation, superior manufacturing, same day shipping, and professional follow up, Luzerne Optical will provide a satisfying experience that is consistent and reliable.

Luzerne Optical can meet your gas permeable lens needs.

- Spherical
- Astigmatic
- Keratoconus
- Multifocal and Bifocal
- Post Surgical

The Luzerne Service Guarantee™

The Luzerne Service Guarantee™ ensures that any GP lens order placed by 12 pm EST will be manufactured to your exact specifications and shipped the same day.

SOFT CONTACT LENSES

Luzerne Optical provides the soft contact lenses that help your practice stay competitive:



- **Definition AC** - Sold to independent ECP's only!
Not sold through 1-800-CONTACTS or other 'big box' retail.
In stock for fast shipment.
- Alcon
- Bausch & Lomb
- CooperVision
- PolyVue