

Introducing The Latest Technology in UV and HEV Blue Light Protection

TheraBlueTM *The Clearer Choice*

TheraBlue is unlike other blue light protection products in today's marketplace in several ways.

- ⚙ *TheraBlue is a clearer lens unlike other products.*
- ⚙ *The UV Ray and HEV Blue Light Protection comes from the lens material itself.*
- ⚙ *TheraBlue is not a coating like some other products on the market and does not have a purple or blue reflective color that some may object to.*
- ⚙ *TheraBlue does not have a yellow, orange, or peach color pigment like some other products on the market that some may object to.*
- ⚙ *TheraBlue is available in four different materials: 1.67, 1.60, polycarbonate and an impact resistant 1.56.*
- ⚙ *TheraBlue is compatible with a wide variety of Anti-Reflective Coatings and can be ordered with or without AR.*
- ⚙ *TheraBlue is available in Single Vision, Progressive lenses, Digital Round 22, Digital Round 25, and Digital Round 28 bifocals and computer lenses in all four materials.*
- ⚙ *TheraBlue is also available in finished stock single vision lenses in 1.67 aspheric with AR coating and 1.56 impact resistant lens with AR coating (Poly with AR coming soon). Both are available in a greater Rx range than other blue light solution products on the market.*



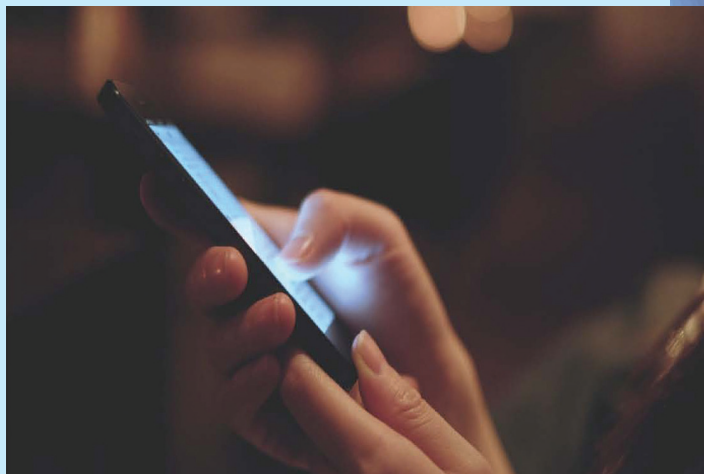
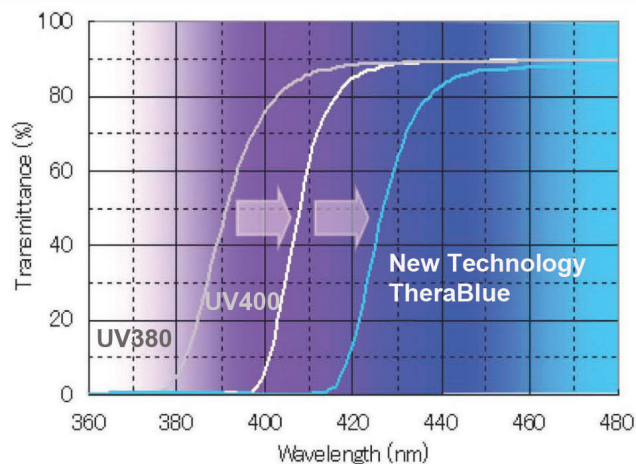
Luzerne Optical Laboratories, Ltd.

"With an Eye on Service and Quality!"

800-233-9637

www.LuzerneOptical.com

TheraBlue selectively filters the damaging HEV Blue Light (Blue Violet) which some studies show may lead to Digital Eye Strain, cause permanent eye damage and increase the risk of AMD (Age-Related Macular Degeneration). At the same time, **TheraBlue** allows for the good Blue Light (Blue Turquoise) which is known to positively regulate circadian rhythm, memory and cognitive function, elevate moods and boost alertness.



TheraBlue™

(Absorbs & Filters Blue Light)

at 415nm	TeraBlue 1.67	_____	Filters Approximately 98%
	TeraBlue 1.60	_____	98%
	TeraBlue 1.56	_____	88%
	TeraBlue Poly	_____	57%

Compare

Leading Blue Light Coatings

(Reflect Blue Light)

at	Approximately
415nm	20%

at 430nm	TeraBlue 1.67	_____	41%
	TeraBlue 1.60	_____	36%
	TeraBlue 1.56	_____	23%
	TeraBlue Poly	_____	15%

Compare

at	Approximately
430nm	13%

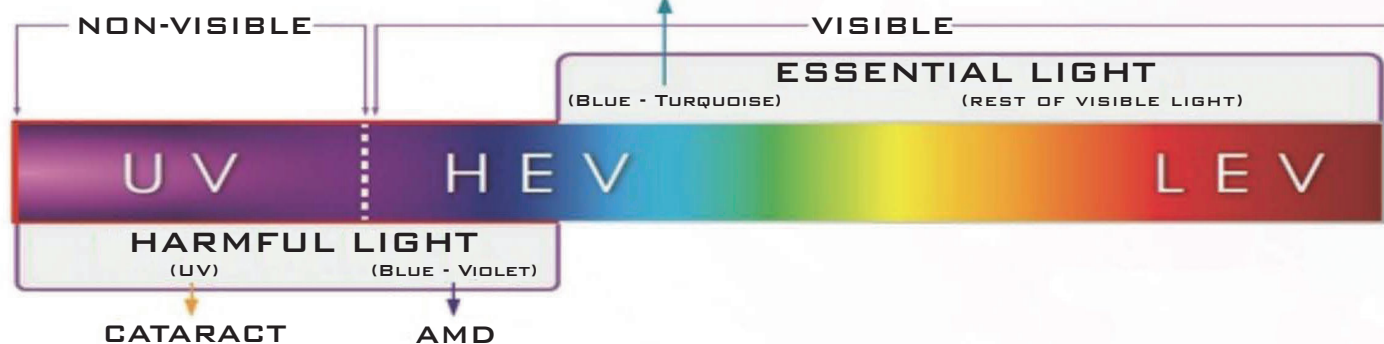
at 450nm	TeraBlue 1.67	_____	11%
	TeraBlue 1.60	_____	11%
	TeraBlue 1.56	_____	10%
	TeraBlue Poly	_____	10%

Compare

at	Approximately
450nm	5%

HUMAN BIOLOGICAL CLOCK

PUPILLARY REFLEX



Luzerne Optical Laboratories, Ltd.

"With an Eye on Service and Quality!"

800-233-9637

www.LuzerneOptical.com